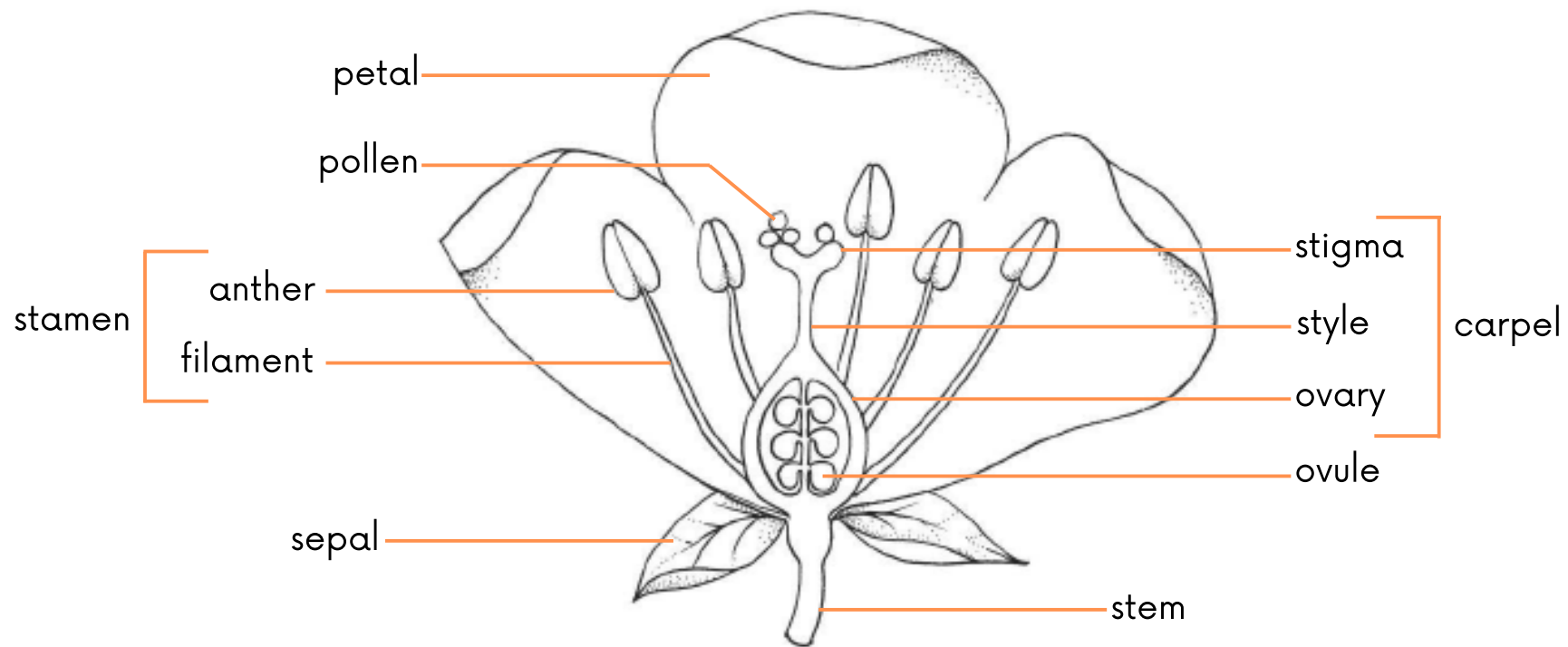


FLOWER POWER: PARTS OF A FLOWER

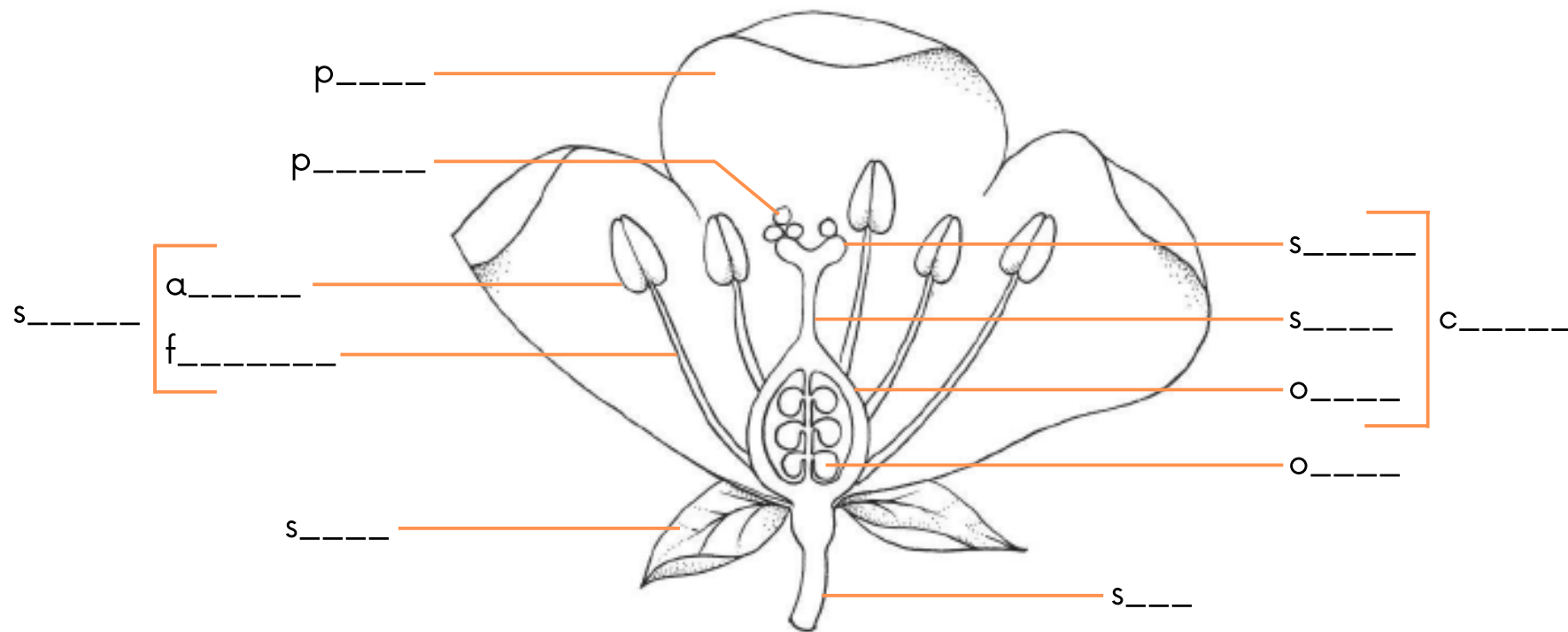
Have a go at labelling the parts of a flower using the words in the box below.



petal pollen stamen anther filament stigma
ovary sepal style carpel ovule stem

FLOWER POWER: PARTS OF A FLOWER

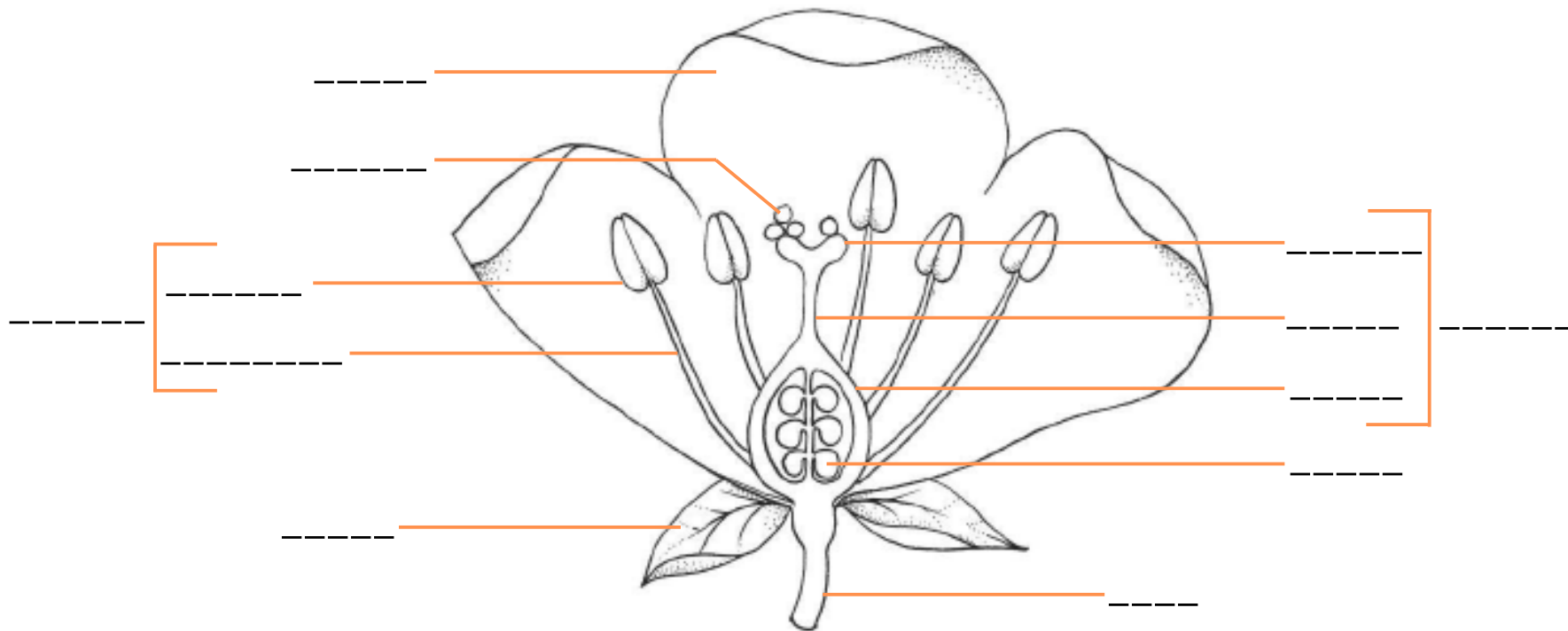
Have a go at labelling the parts of a flower using the words in the box below.



petal pollen stamen anther filament stigma
ovary sepal style carpel ovule stem

FLOWER POWER: PARTS OF A FLOWER

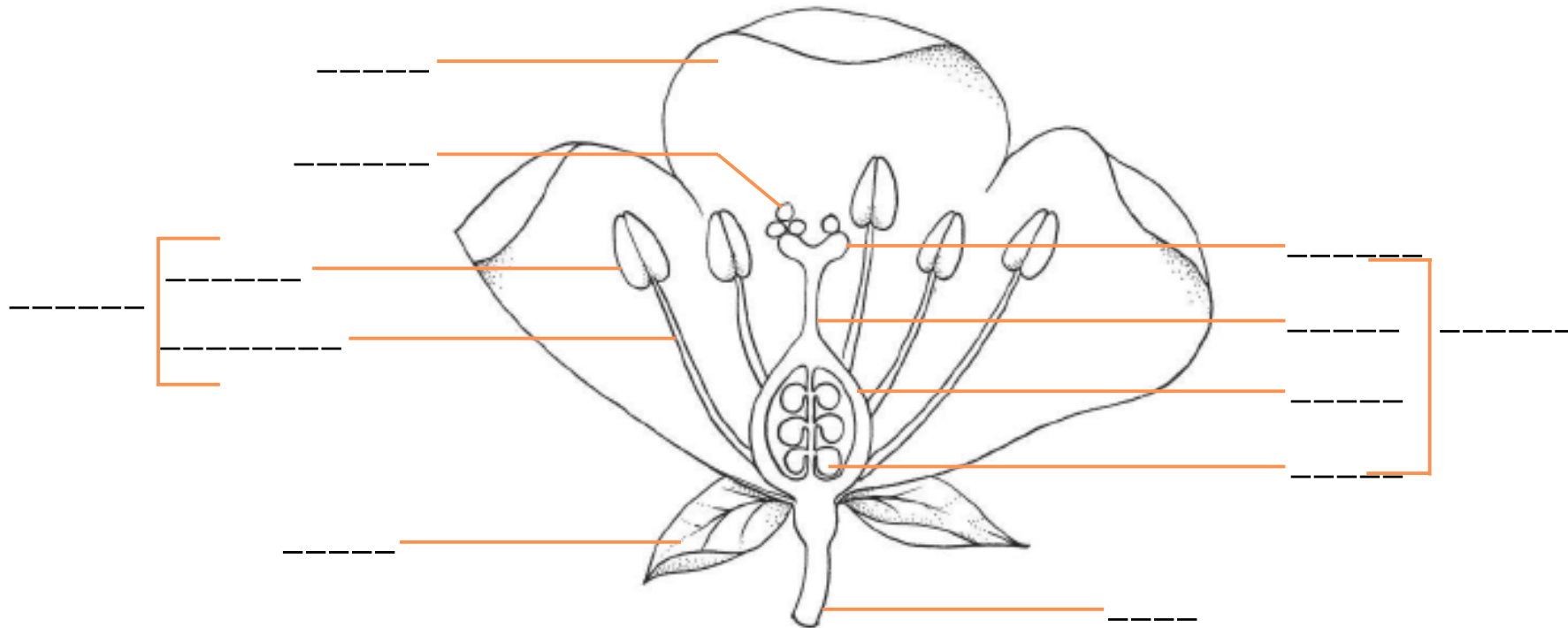
Have a go at labelling the parts of a flower using the words in the box below.



petal pollen stamen anther filament stigma
ovary sepal style carpel ovule stem

FLOWER POWER: PARTS OF A FLOWER

Have a go at labelling the parts of a flower. Use the words and definitions in the box below to help you.



Petal: acts as a colourful advert to potential pollinators.

Stamen: the male part of the flower made up of the anther and filament.

Carpel: the female part of the flower made up of the style, stigma and ovary.

Anther: produces pollen.

Filament: holds up the anther.

Pollen: fertilises the ovule to produce seeds.

Ovary: contains ovules.

Stigma: the top of the carpel which receives pollen.

Style: connects the stigma to the ovary.

Stem: holds up the flower.

Ovule: develops into a seed once fertilised by pollen.

Sepal: leaves that protect the unopened flower.